



BROMLEY CIVIC CENTRE, STOCKWELL CLOSE, BROMLEY BRI 3UH

TELEPHONE: 020 8464 3333

CONTACT: Kerry Nicholls
kerry.nicholls@bromley.gov.uk

DIRECT LINE: 020 8313 4602

FAX: 020 8290 0608

DATE: 20 July 2015

CARE SERVICES, EDUCATION AND PUBLIC PROTECTION AND SAFETY PDS COMMITTEES INFORMATION PACK

Meeting to be held on Wednesday 22 July 2015

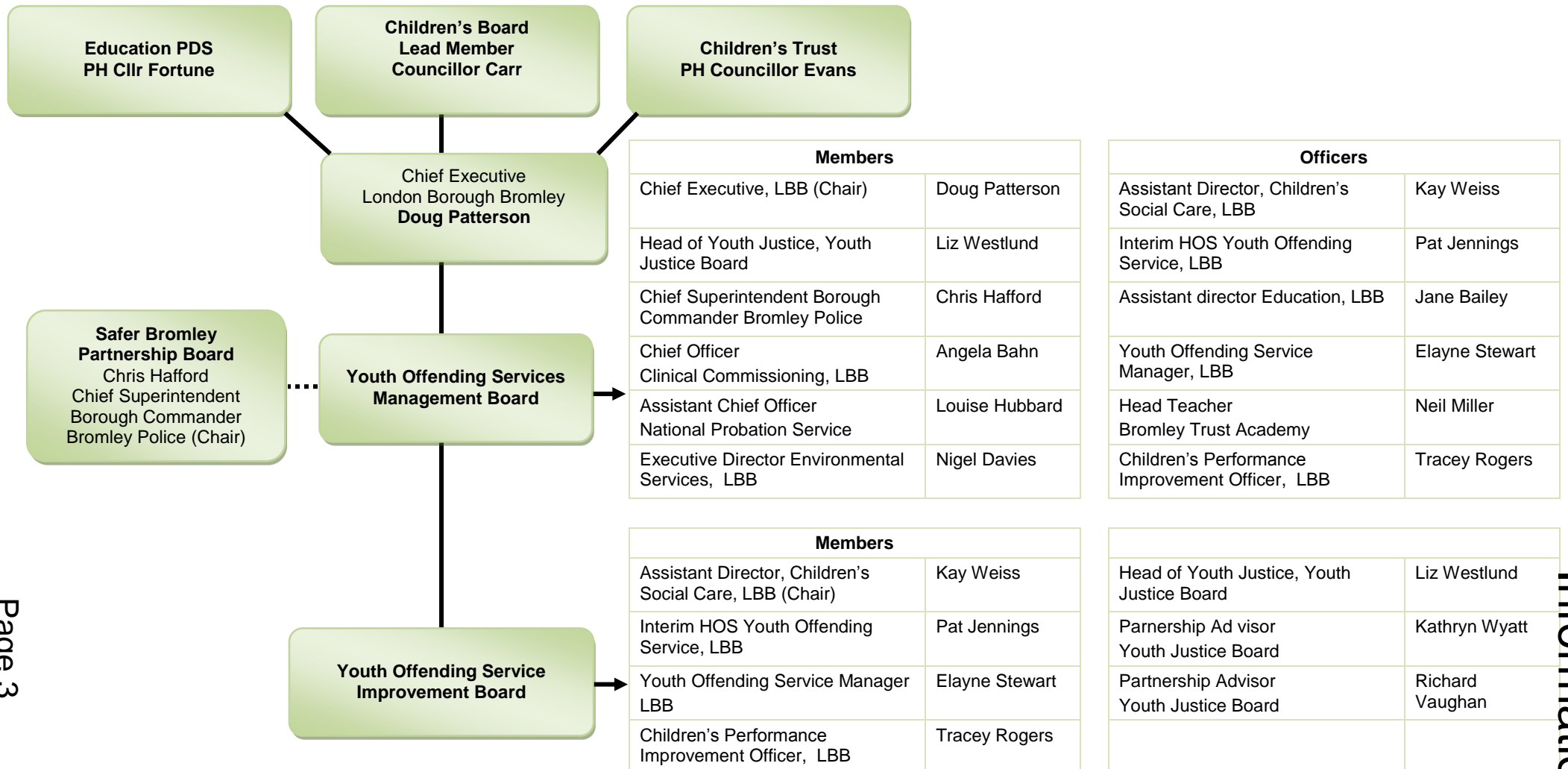
The information pack comprises:

- 1 FINDINGS OF THE FULL JOINT INSPECTION OF YOUTH OFFENDING SERVICES
WORK IN BROMLEY 2015 AND POST-INSPECTION IMPROVEMENT PLAN**
 - a GOVERNANCE ARRANGEMENTS FOR THE YOUTH OFFENDING SERVICE
(Pages 3 - 4)**
 - b YOUTH OFFENDING SERVICE DEPARTMENTAL STRUCTURE - JULY 2015
(Pages 5 - 6)**
 - c TYPICAL BROMLEY YOUNG OFFENDER PROFILE (Pages 7 - 8)**
 - d CASE LIST INFORMATION (Pages 9 - 10)**
 - e DISPOSAL OPTIONS CURRENTLY AVAILABLE FOR YOUNG PEOPLE IN
BROMLEY (Pages 11 - 14)**
 - f LIST OF INSPECTIONS OF THE YOUTH OFFENDING SERVICE
(Pages 15 - 16)**
 - g PERFORMANCE REPORT (Pages 17 - 24)**

Members and Co-opted Members have been provided with advanced copies of the Part 1 (Public) briefing via email. The Part 1 (Public) briefing is also available on the Council website at the following link: <http://cds.bromley.gov.uk/ieListMeetings.aspx?CId=559&Year=0>

This page is left intentionally blank

London Borough of Bromley Governance Arrangements

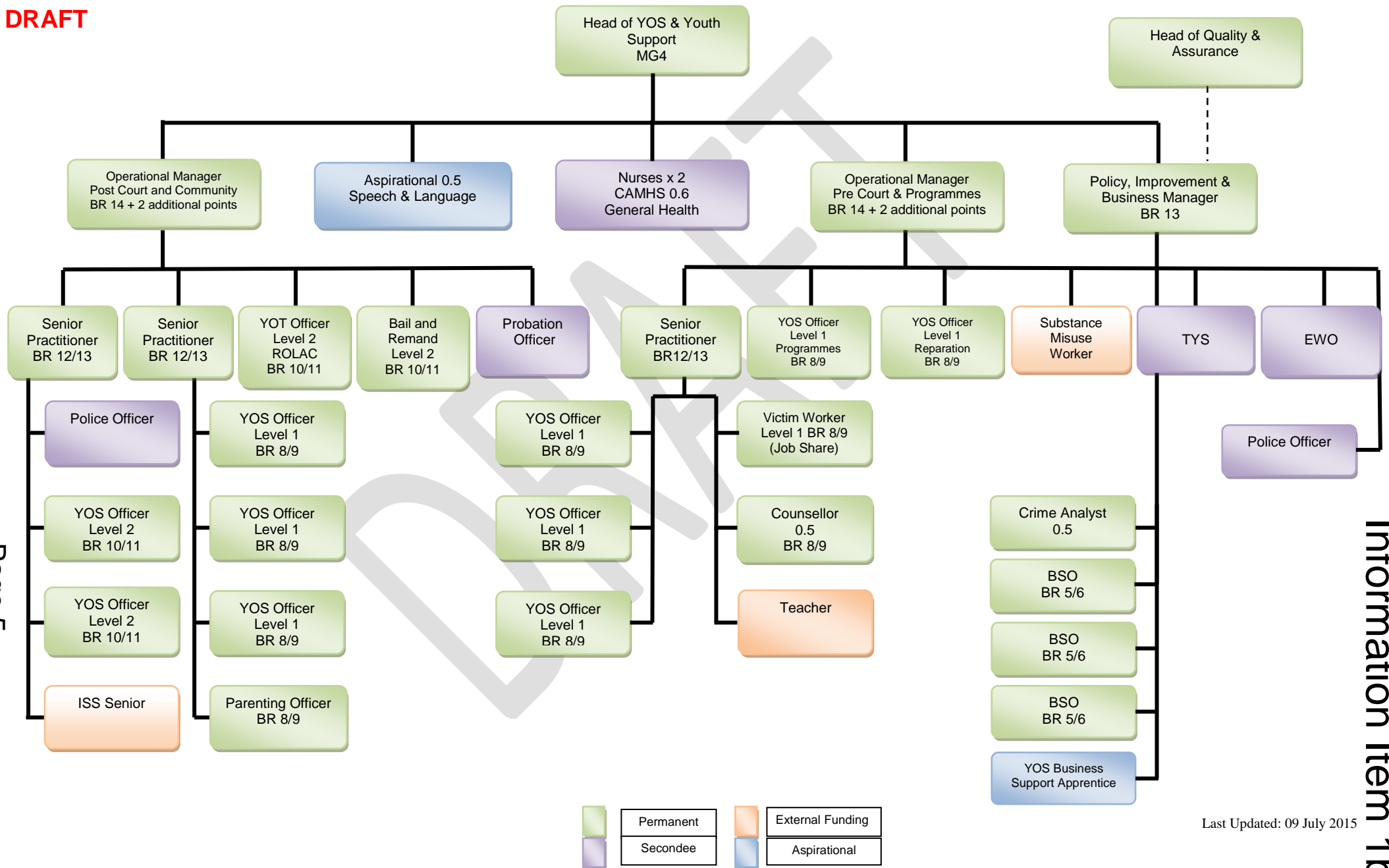


This page is left intentionally blank

Departmental Structure

Bromley Youth Offending Service (YOS)

DRAFT



Page 5

Information Item 1b

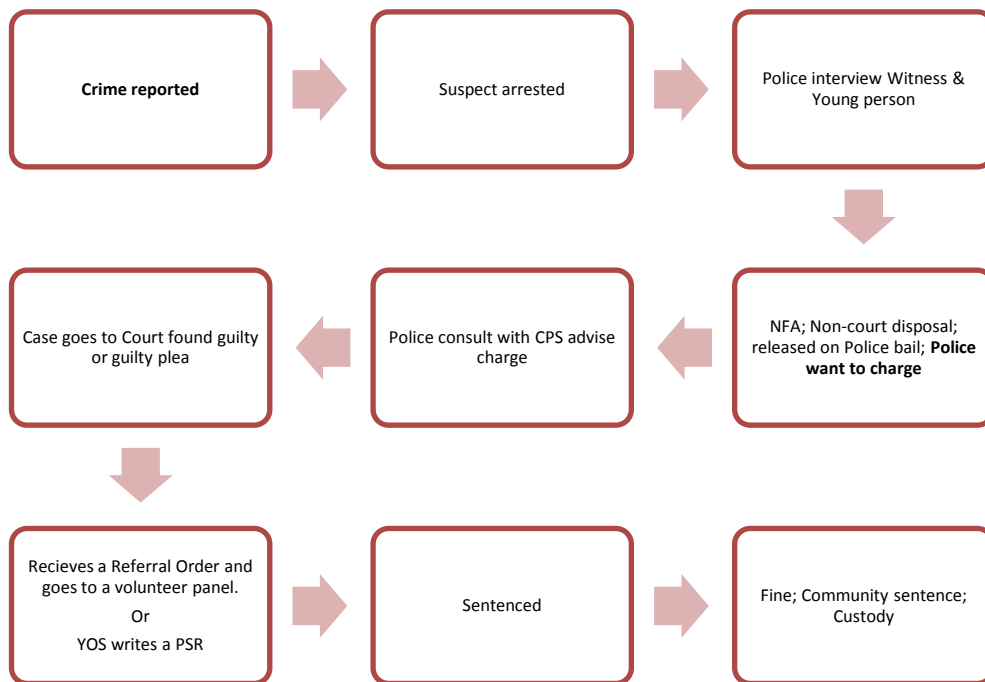
	Permanent		External Funding
	Seconded		Aspirational

Last Updated: 09 July 2015

This page is left intentionally blank

TYPICAL BROMLEY YOUNG OFFENDER PROFILE

A Bromley young offender.



Based upon the unverified Reoffending 14/15 cohort (n 202) 1/2 year data

- Mainly white young people N 136 white an over-representation of black young people of n 46
- The large majority of young people are aged 16 – 17 years old
- Young men make up the largest proportion of the cohort n 176 and n 27 young women
- N 11 young people are LAC
- Many young people reoffend within the first month of their first event n 20 and the next highest being 3 months n 15
- Young people whom enter the criminal justice for the first time offence are committing mainly Possession of cannabis and Assault
- Most of the young people referred to the substance misuse worker are mainly cannabis users but are also poly users (alcohol; and “legal highs”)
- The 202 young people are responsible for 241 offences during the period.
- The highest number of offenders reoffending were 17+ year olds n 88 whom are responsible for 106 offences
- Of this cohort n 5 had received a custodial sentence
- The majority of young people reside in Orpington and Penge with the remainder living in Bromley

Offence_type	Number 2014/2015	%
ARSON	2	0%
BREACH OF BAIL	6	1%
SEXUAL OFFENCE	14	3%
ROBBERY	24	4%
FRAUD AND FORGERY	2	0%
THEFT AND HANDLING	92	17%
DOMESTIC BURGLARY	40	7%
RACIALLY AGGRAVATED	5	1%
PUBLIC ORDER	38	7%
VIOLENCE AGAINST THE PERSON	134	24%
DRUGS OFFENCE	66	12%
VEHICLE THEFT	20	4%
MOTORING OFFENCES	26	5%
BREACH OF CONDITIONAL DISCHARGE	3	1%
OTHER	12	2%
BREACH OF STATUTORY ORDER	19	3%
CRIMINAL DAMAGE	46	8%
NON DOMESTIC BURGLARY	7	1%
Total	556	

Case List Last 3 years

	2012/13	% 2012/13	2013/14	% 2013/14	2014/15	% 2014/15
Bail	9	2%	7	1%	4	1%
Court Order	172	37%	111	23%	122	27%
Custody	10	2%	21	4%	16	4%
Custody Licence	10	2%	16	3%	10	2%
ISS	13	3%	30	6%	16	4%
Parenting	28	6%	30	6%	13	3%
Pre court	30	6%	84	17%	91	20%
Remand	24	5%	23	5%	18	4%
Triage/Prevention	171	37%	168	34%	164	36%
Total	467		490		454	

Active Case List

	Total	%
Bail	1	1%
Court Order	85	50%
Custody	10	6%
Custody Licence	4	2%
ISS	5	3%
Parenting	1	1%
Pre court	28	16%
Remand	1	1%
Triage/Prevention	35	21%
Total	170	

This page is left intentionally blank

DISPOSAL OPTIONS CURRENTLY AVAILABLE FOR YOUNG PEOPLE IN BROMLEY

Disposal options include:

- No Further Action
- Informal Warning
- Youth Caution
- Youth Conditional Caution
- Parenting Orders
- Referral Orders
- YRO
- ISS
- DTO

Informal warning

It is recognised that there will be some cases where the circumstances surrounding the offence and offender are so minor in nature that the matter can be dealt with in an entirely informal manner and totally diverted from the CJS.

Youth Caution / Youth Conditional Caution

Youth Cautions and Youth Conditional Cautions represent the first formal responses to young people who offend.

Bail for assessment

As part of the decision making process a decision maker may feel that further assessment is necessary. S34 of PACE allows the police to bail a young person pending a disposal decision. That power involves a power to bail pending assessment of whether or not prosecution would be in the public interest as this is one of the criteria for deciding whether or not a Youth Conditional Caution should be given.

Report for Summons Cases

Where a young person is reported for summons for a motoring matters,

Parenting Orders

A Parenting Order is an order under the Crime and Disorder Act 1998. The Parenting Order was designed primarily to help and support parents when their children get into trouble. A court may make an Order on a parent or Guardian of: - a juvenile who is convicted of an offence.

If a parent does not comply with any conditions of the Parenting Order without giving a reasonable excuse to the responsible officer/YOS they may be in breach of the Parenting Order.

This means the parent will be given a written warning and if they still failed to comply with the order a 'Review Meeting' will be called. If after these procedures a parent still does not comply with the order they may be prosecuted. If they are convicted the Court can:

- Fine a parent (up to £1000)
- Issue a Community Penalty

Referral order

A referral order is an order available for young offenders who plead guilty to an offence whereby the young offender is referred to a panel of two/three trained community volunteers and a member of the youth offending team. It can be for a minimum of three months and a maximum of twelve months.

Youth Rehabilitation Order

(YRO) is a Community order imposed by a Court which is able to be given to young people under the age of 18 years old when they are being sentenced for having committed a criminal offence. The maximum period of time for which a Youth Rehabilitation Order will last is three years. A Youth Rehabilitation Order will usually contain one or more requirements which must be adhered to by that young offender. These requirements may include the requirement for the young person to meet with a worker from the Youth Offending Service or the young person may be required to comply with other activities examples of which are unpaid work, a curfew or specific conditions on where they can live.

The full list of requirements which can be imposed on a youth offender under a Youth Rehabilitation Order are as follows:

Supervision

Activity

Programme

Unpaid work

Curfew

Attendance centre

Education

Mental Health Treatment

Residence

Local Authority Residence

Drug Treatment

Drug Testing

Prohibited Activity

Intensive Supervision and Surveillance

Exclusion

A Youth Rehabilitation Order will usually be made up of one or more of the above requirements.

Intensive Supervision and Surveillance

ISS works with the persistent and prolific young offenders who commit a large number of youth crimes. As part of ISS (formally ISSP) young people undertake a range of activities including reparative activities, restoring the costs of crime and reintegrating them back into the community. The programme seeks lasting change for young people and their families and reassurance to victims and the community. It provides very troubled young people with an opportunity to turn their lives around.

A core part of programmes also focuses on education and training needs, enabling young people to develop their skills and become more employable. Every young person has their own plan, tailored to tackle the root causes of their offending behaviour.

The Intensive Supervision and Surveillance (ISS) is the most rigorous non-custodial intervention available for young offenders. As its name suggests, it combines unprecedented levels of community-based surveillance with a comprehensive and sustained focus on tackling the factors that contribute to the young person's offending behaviour.

The scheme targets the most active repeat young offenders and also those who commit the most serious crimes. The main aims of the programme are to:

- Reduce the frequency and seriousness of offending in the target groups
- Tackle the underlying needs of offenders which give rise to offending, with a particular emphasis on education and training
- Provide reassurance to communities through close surveillance backed up by rigorous enforcement

Detention Training Order (DTO)

A custodial sentence for 12-17 year olds. It combines detention with training and will be used for young people who commit a serious offence or commit a number of offences.





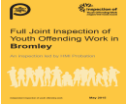
Half of the sentence will be spent in custody and the other half will be supervised by the Youth Offending Service (YOS) out in the community. There will be a lot of time spent on training and education to help young people stop offending when their sentence is finished.

Young will be taken from court and taken to the detention and training centre. Young will be told the name of the centre they will be going to and where it is.

- 12-14 year olds will usually go to a Secure Training Unit.
- 15-17 year olds will go to a Young Offender Institution

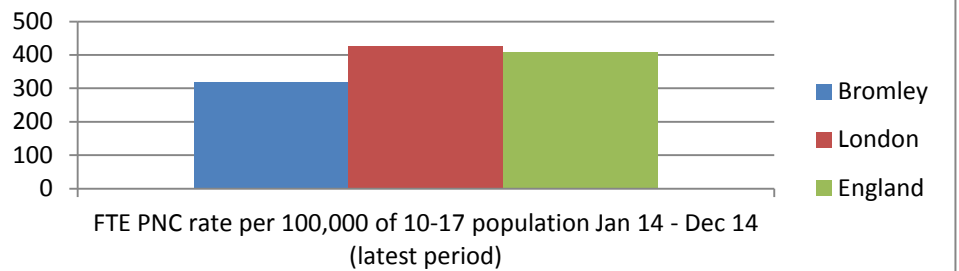
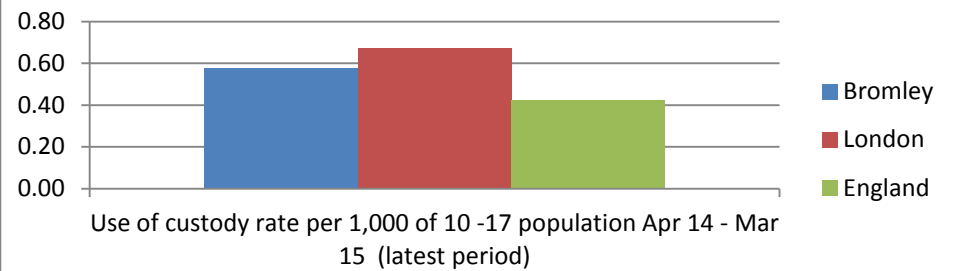
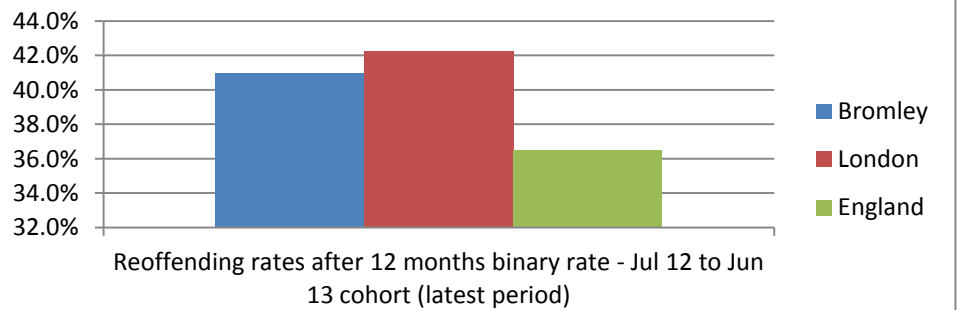
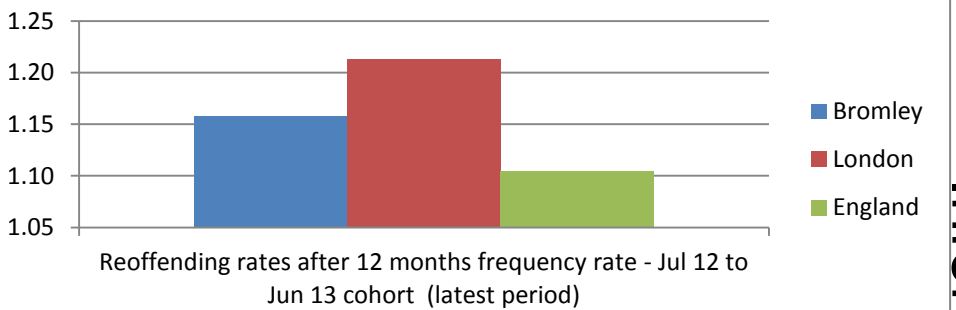
This page is left intentionally blank

INSPECTION OVER THE LAST 10 YEARS

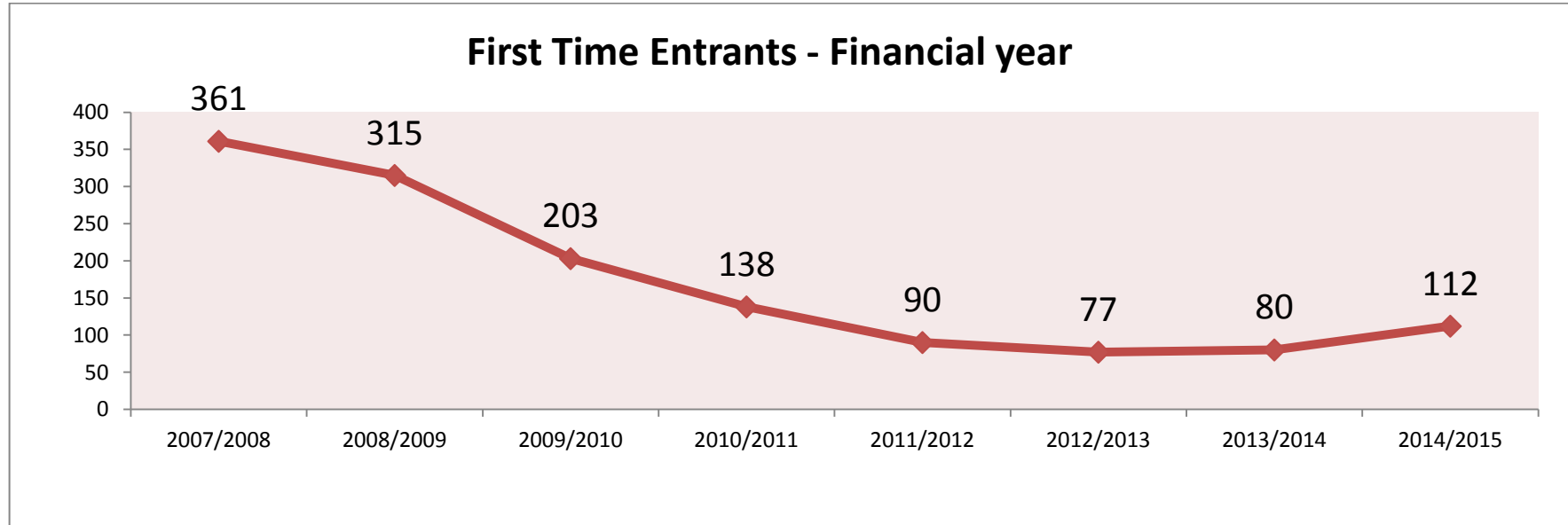
Date	Inspection Type	Outcome	
November 2006	Her Majesty Inspection Probation Full Inspection	Failed/Inadequate service	
January 2008	Her Majesty Inspection Probation Re- Inspection	Improving service	
November 2011	Her Majesty Inspection Probation Full Joint Inspection	Minimum improvement required	
November 2011	Care Quality Commission	Good service	
November 2013	An Inspection of the work of Probation Trusts and Youth Offending Teams to protect children and young people	Feedback Positive	 Protecting Children Thematic Report.pdf
July 2014	Resettlement Thematic Inspection - YOT Resettlement Work	Feedback Adequate	
January 2015	Her Majesty Inspection Probation Full Joint Inspection	Failed/inadequate service	

This page is left intentionally blank

STATUTORY TARGETS

FIRST TIME ENTRANCE rate per 100,000 of 10-17 population	CUSTODY rate per 1000 of 10-17 population																
 <p>FTE PNC rate per 100,000 of 10-17 population Jan 14 - Dec 14 (latest period)</p> <table border="1"> <tr><th>Region</th><th>Rate</th></tr> <tr><td>Bromley</td><td>320</td></tr> <tr><td>London</td><td>420</td></tr> <tr><td>England</td><td>400</td></tr> </table>	Region	Rate	Bromley	320	London	420	England	400	 <p>Use of custody rate per 1,000 of 10-17 population Apr 14 - Mar 15 (latest period)</p> <table border="1"> <tr><th>Region</th><th>Rate</th></tr> <tr><td>Bromley</td><td>0.58</td></tr> <tr><td>London</td><td>0.68</td></tr> <tr><td>England</td><td>0.42</td></tr> </table>	Region	Rate	Bromley	0.58	London	0.68	England	0.42
Region	Rate																
Bromley	320																
London	420																
England	400																
Region	Rate																
Bromley	0.58																
London	0.68																
England	0.42																
<p>For the verified year this shows 94 young people enter the CJS. We are below the region and national rate. However due to a smaller cohort our percentage increase against the baseline has increased by 14.6% (N=11 Young People). *Low is good</p>	<p>This is verified data from the YJB and it shows that there has been a reduction of 26% (N= 6 fewer Young People) whom receive custodial sentences against the previous year. *Low is good</p>																
REOFFENDING RATE – BINARY RATE	REOFFENDING RATE – FREQUENCY RATE																
 <p>Reoffending rates after 12 months binary rate - Jul 12 to Jun 13 cohort (latest period)</p> <table border="1"> <tr><th>Region</th><th>Rate</th></tr> <tr><td>Bromley</td><td>40.99%</td></tr> <tr><td>London</td><td>43.23%</td></tr> <tr><td>England</td><td>36.6%</td></tr> </table>	Region	Rate	Bromley	40.99%	London	43.23%	England	36.6%	 <p>Reoffending rates after 12 months frequency rate - Jul 12 to Jun 13 cohort (latest period)</p> <table border="1"> <tr><th>Region</th><th>Rate</th></tr> <tr><td>Bromley</td><td>1.16</td></tr> <tr><td>London</td><td>1.22</td></tr> <tr><td>England</td><td>1.10</td></tr> </table>	Region	Rate	Bromley	1.16	London	1.22	England	1.10
Region	Rate																
Bromley	40.99%																
London	43.23%																
England	36.6%																
Region	Rate																
Bromley	1.16																
London	1.22																
England	1.10																
<p>This chart shows whether a young person reoffends or not within the same period. We are below the region but substantially above the national rate. If we compare this to the previous year we have reduced the binary rate by 5.2% (N=43.23% to 40.99%) *Low is good</p>	<p>This chart shows the number of re-offences by the offenders on the cohort. This cohort is comprised of all young people who receive a custody outcome (youth caution to Custody) during the above period. This shows Bromley is below the London level, but above the national level. There is an increase of 16.2%. Young People are tracked beyond the age-range of YOS involvement therefore 18 years old and above would be incorporated into this measure. *Low is good</p>																

LOCAL DATA - Unverified



Performance	Comments
	<p>In the year 2014/15 FTE has been increased by 40% in FTE from the baseline period 2013/14. Resulting in an actual increase of 32 young people (80-112) entering the CJS.</p> <p>We are dependent upon partners to reduce the number through early intervention or where appropriate Police officers giving the young people a restorative disposal. Young People who receive fines or conditional discharges will also be counted towards this target. The YOS will not automatically provide interventions for these young people.</p>

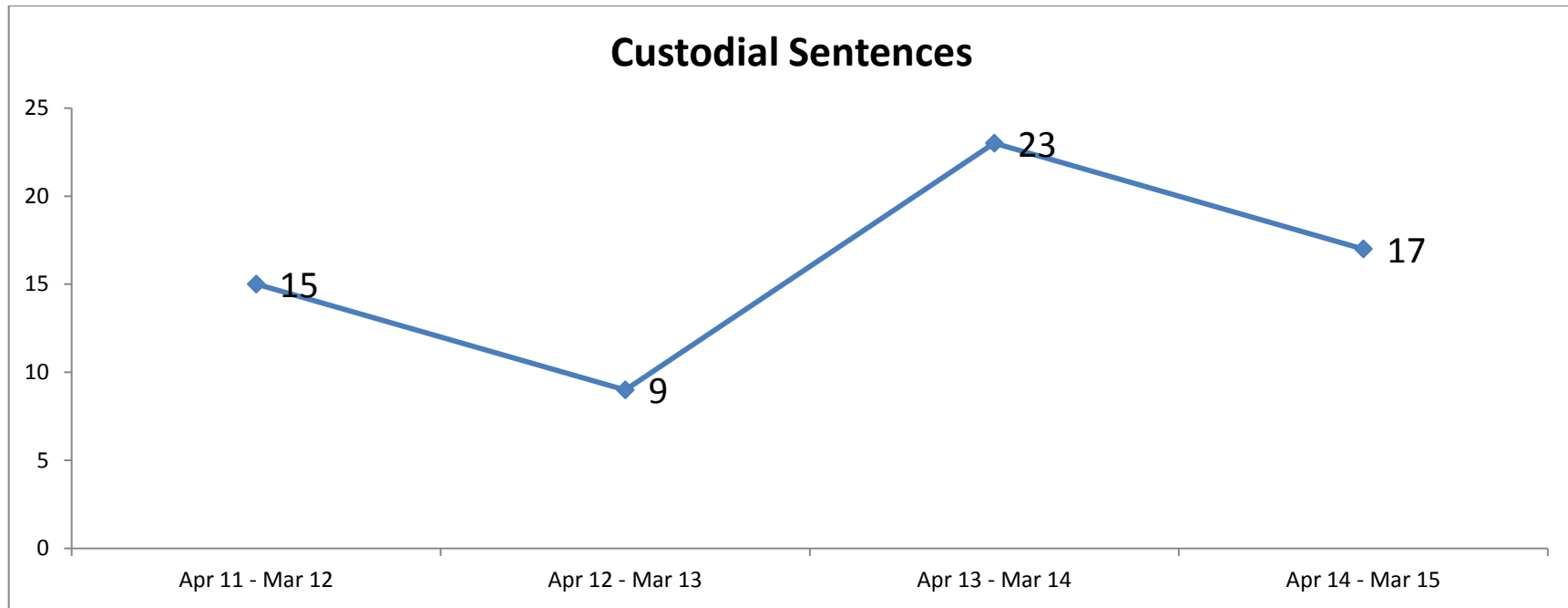
Reoffending

LOCAL DATA - unverified

	Local performance (based on local data) 2014/2015
Number of young people in cohort:	202
Number of young people reoffending:	67
Number of further offences committed by cohort members:	241
Overall binary reoffending rate	33.2%
Overall frequency reoffending rate:	1.19 (241/202)
Overall frequency rate of re-offenders	3.60 (241/67)

Performance	Comments
	This represents the 2014-2015 cohort and is unverified data. This table illustrates the binary and frequency of offending by the above cohort and is at the halfway point of a 16 month cycle. Currently less young people reoffend but they committed greater number of offences, this mirrors previous years.

Custody



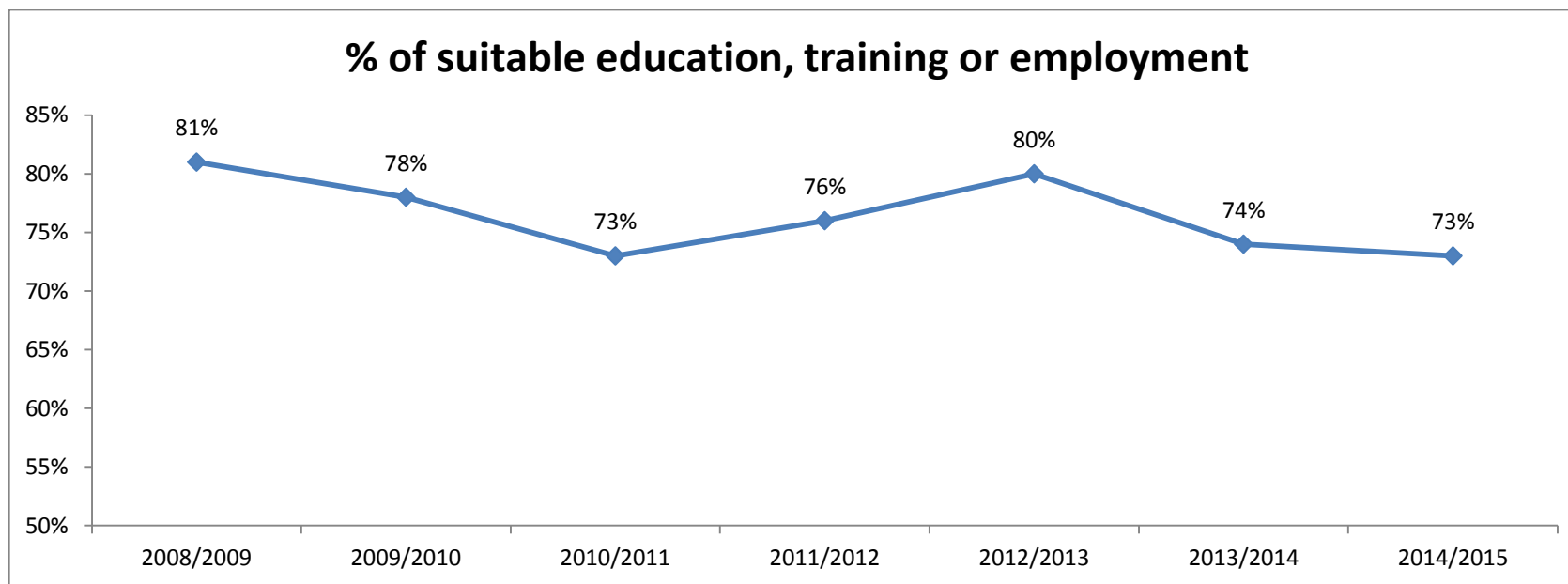
Performance	Comments
	<p>This shows the actual numbers of young people who received a custodial sentence during the period and this shows a reduction against last year's figures.</p>

Engagement by young people who offend in suitable education, training and employment

Definition

This indicator measures the proportion of young people on relevant youth justice disposals who are actively engaged in suitable education, training and employment (ETE) **when the disposal closes**. Active engagement is defined as 25 or more hours for young people of school age and 16 or more hours for those above statutory school age.

Local Target 80%

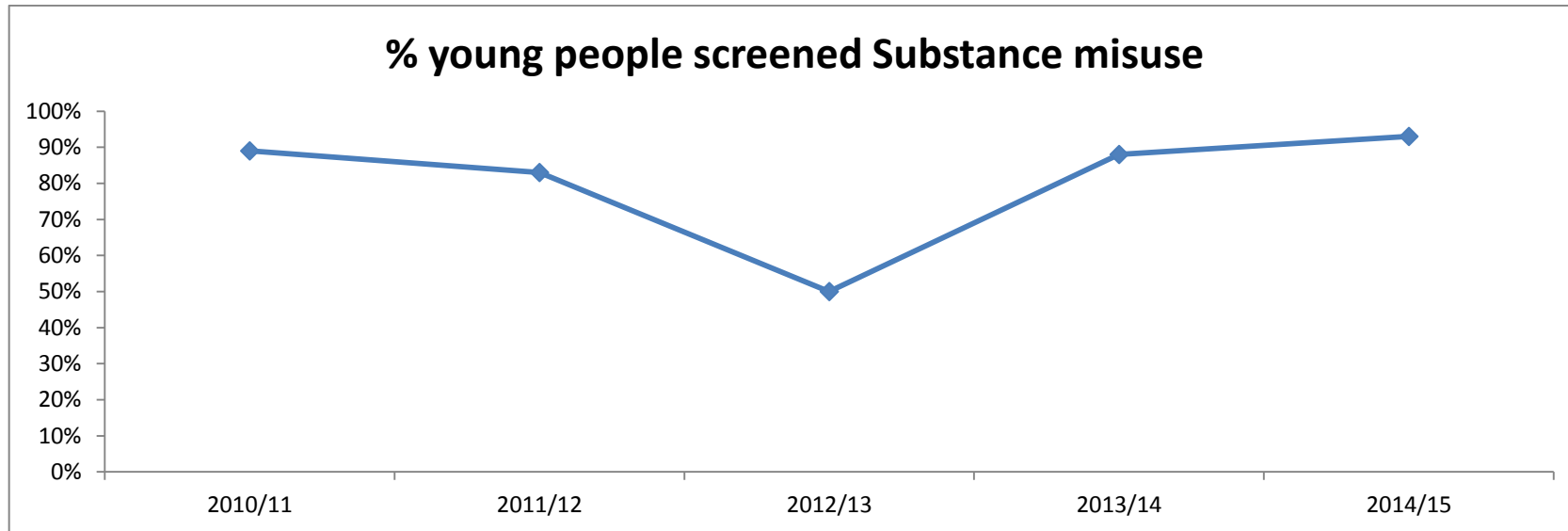


Performance	Comments
	This is as local target the ambition is to achieve 100%, however this is extremely difficult due to the past educational levels of the young people.

Substance misuse

Ensure that all young people are screened for substance misuse, that those that are identified with needs receive appropriate specialist assessment within five working days

Local Target 90%

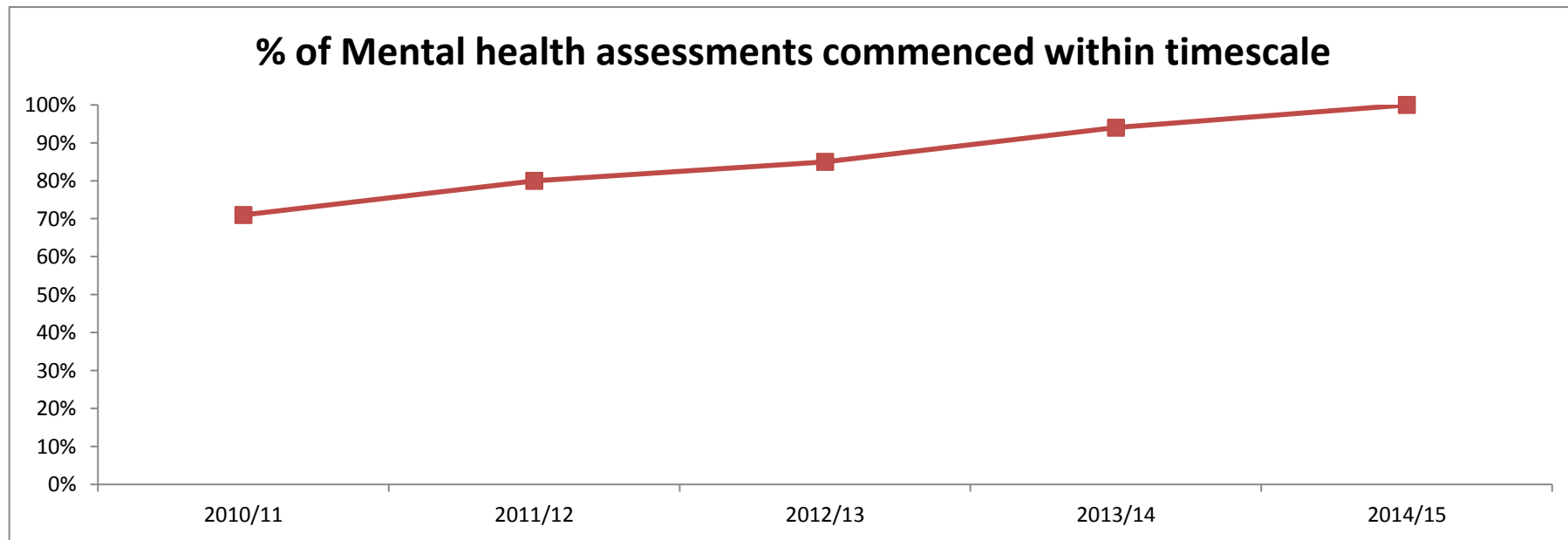


Performance	Comments
	This target has been met due to the placement of a substance worker with the team. The Board if minded could increase the target.

Mental Health

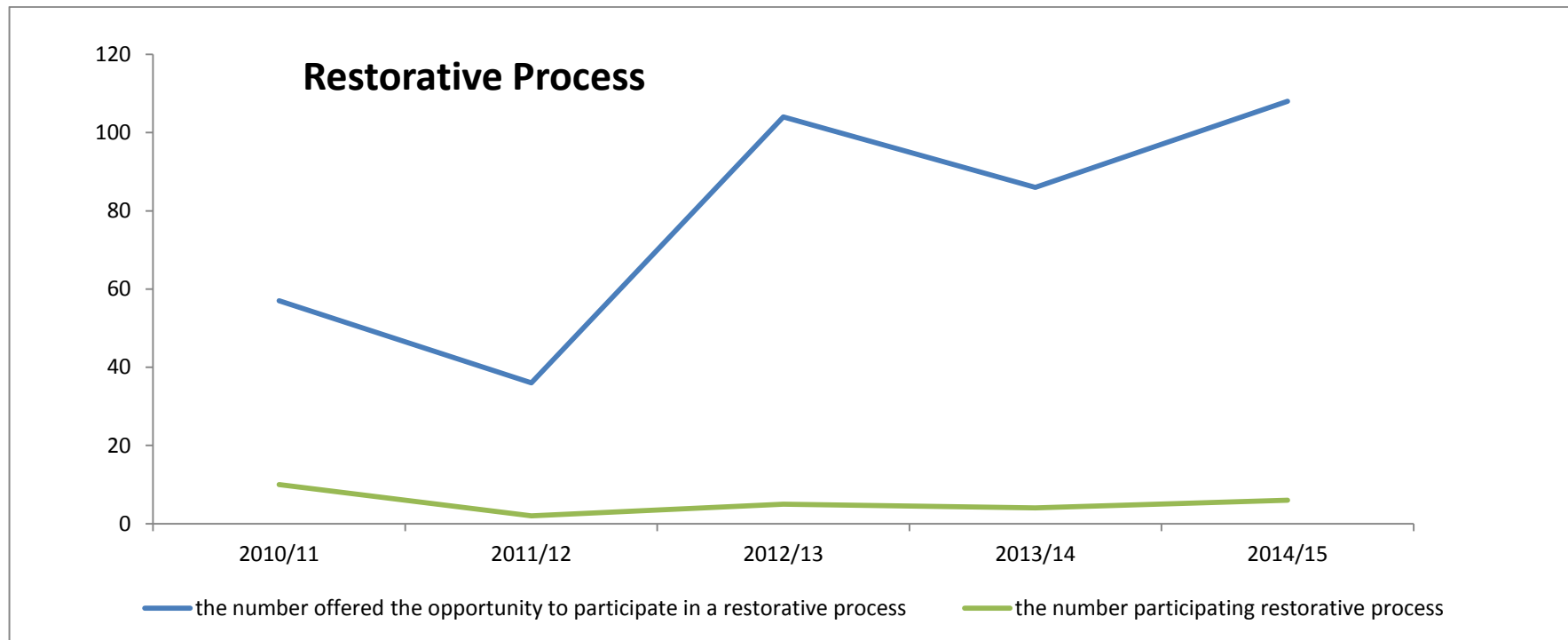
All mental health concerns are referred by the YOT for an assessment and engagement by the appropriate CAMHS Tiers 1-3 service commenced within 15 working days of referral

Local Target 90%



Performance	Comments
	We have met the target.

Victim



Performance	Comments
	<p>This target indicates the number of Youth Crime victims contacted by the YOS during the period. The line in green indicates the number of victims whom took up the offer of YOS Services.</p>